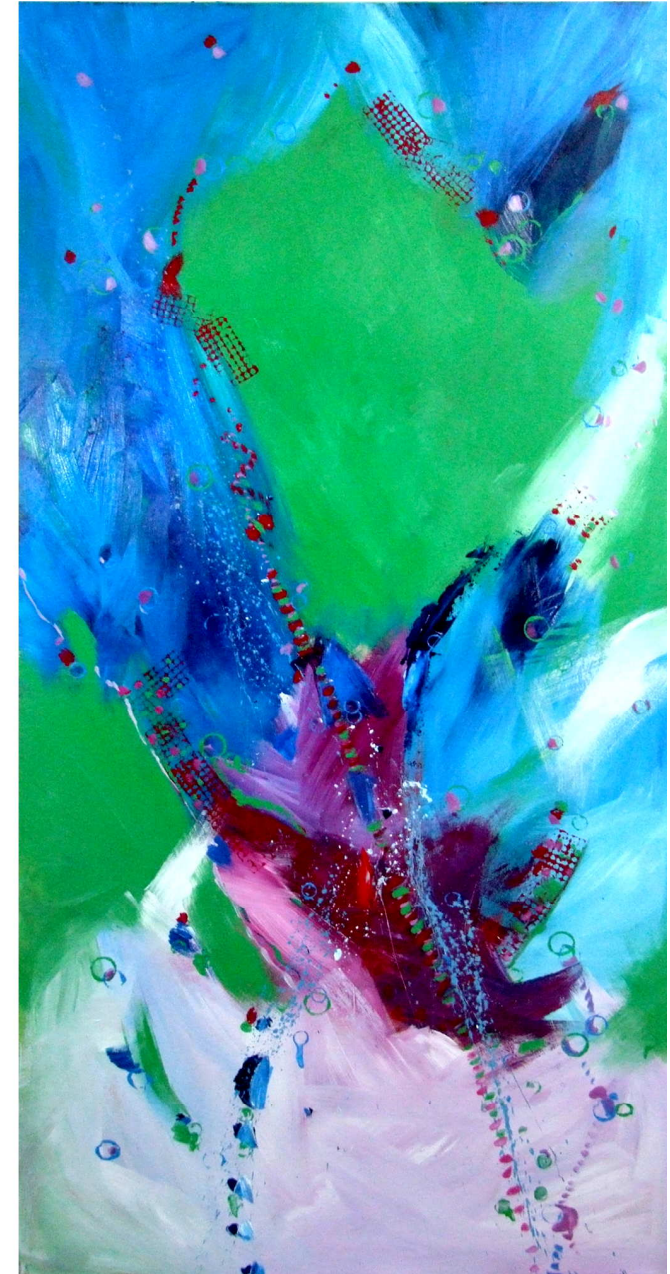


Annette Ragone Hall

Bold, colorful abstracts, florals, figures, & landscapes in acrylic and other media.



Annette Ragone Hall

annette@arhall.com

704-798-9400

Call for appointment to view Annette's work.

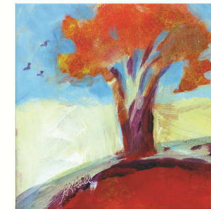
Studio Location:

413 N Lee St. Salisbury, NC 28144

(in the Rail Walk Arts District)

See more of Annette's work on Ragone.com.

Top: *Red Sky Sunset #1* (acrylic, 6"x6"). Bottom row (all are acrylic, 6"x6"): *Hot Bouquet*, *A Stormy Fall Day*, *Soft Purple Bouquet*. Front cover: *Ascension* (acrylic, 96"x48"). Inside flap, top: *Life Glow VIII* (acrylic, 10"x8"). Inside flap, bottom: *A Sip of Tea* (acrylic, 36"x36").



Nature inspires the colorful images Annette Ragone Hall creates. Her goal in creating a piece of art is to grab and hold the viewer's eye, drawing the person deeper into the painting to discover the myriad treasures there. She enjoys hearing what viewers see in her abstract work. She begins her abstract pieces with a color idea, and then creates the image from her imagination. For her pieces with specific

subject matter, such as in *The Red Sea* (above center), she uses reference material. Annette works primarily in acrylic, but also paints in oil, watercolor, pastel, and mixed media. She accepts commissions from those who want a specific color scheme or subject matter that isn't available in an existing piece (call for procedure and pricing, 704-798-9400).

L to R, top: *Circle in the Square* (acrylic, 36"x36"), *An Overwhelming Sense of Red Is Making Me See Spots* (acrylic, 60"x60"), *The Red Sea* (acrylic, 60"x60"). L: *Fulsome Iris* (acrylic, 24"x18"). Center, L to R (all are acrylic, 6"x6"): *Launch to the Moon*, *Along the Dotted Line*, *Orange-tipped Bouquet*, *Flying High*, *Bouquet in Striped Vase*, *Deep Purple*. Bottom: *A Tribe of Iris* (acrylic, 12"x48")

